

FSK-VTE-001

GEKO Venous Thromboembolism (VTE) Prevention Study

FEB 2025 NEWSLETTER



RECRUITMENT

167 / 1200 participants recruited

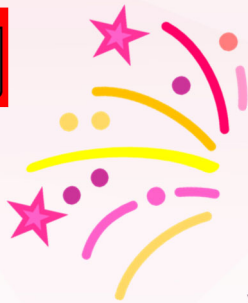
MOST RECENT ENROLMENT: 28 Feb 2025, New Cross Hospital



Top Recruiter: Royal Stoke University Hospital are still the top of the leader board with a grand total of **54 participants** recruited!

February was fabulous! **14 study participants** were recruited in February!
A HUGE **THANK YOU** to you all for your efforts!

As always, **PLEASE** do keep on screening for new patient study participants!
*Only **33** more participants to reach our next milestone!*



NEW SITES!

WELCOME

Yeovil Hospital

Milton Keynes University Hospital

King's College Hospital

We are excited to have you onboard!



REMINDER - CO-ENROLMENT

Patients can be co-enrolled with:

PhEAST Study

MAPS-2

If you do co-enrol study participants, please remember to complete the **Study Level Form**
> **Co-enrolment eCRF**



CORRECTION TO ADVICE

Patient Repatriations - do not withdraw (unless withdrawal is requested).

Complete **30d FUP** and **90d FUP**

(1st part of 90d questionnaire may also be obtainable from patient notes).

Upload Protocol Deviations for all other visits = missed due to repatriation.